

ClimateCafé: transdisciplinary and international knowledge exchange on climate change adaptation for groundwater recharge

Laura Nouques⁽¹⁾, Floris Boogaard^(1,2), Roelof Stuurman⁽¹⁾

⁽¹⁾ Deltares, Daltonlaan 600, 3584 BK Utrecht Postbus, P.O. Box 85467 Utrecht, The Netherlands
(corresponding author: laura.nouques@deltares.nl)

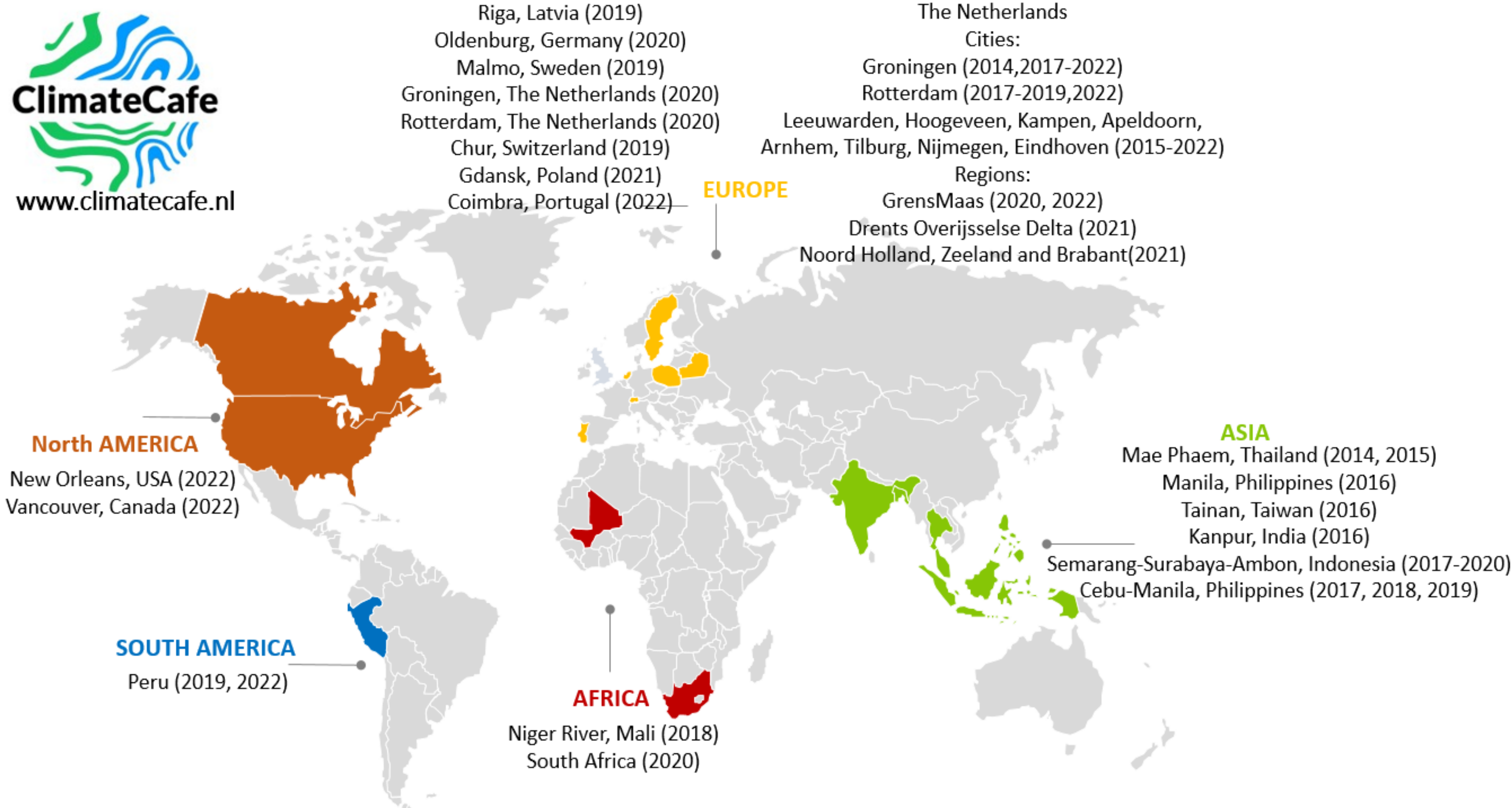
⁽²⁾ 1NoorderRuimte, Centre of Applied Research on Area Development, Zernikeplein 7, P.O. Box 3037, 9701 DA Groningen, Netherlands

1. Introduction

ClimateCafé is a multi-, trans-, interdisciplinary, international event of several days in which young professionals, stakeholders and scientist come together to collect data and design (potential) solutions for climate change adaptation in rural or urban areas.

Over 50 global ClimateCafés are held around the world mainly aiming to enhance resilience and reduce vulnerability of urban or rural communities by sharing knowledge, raising awareness and building capacity.

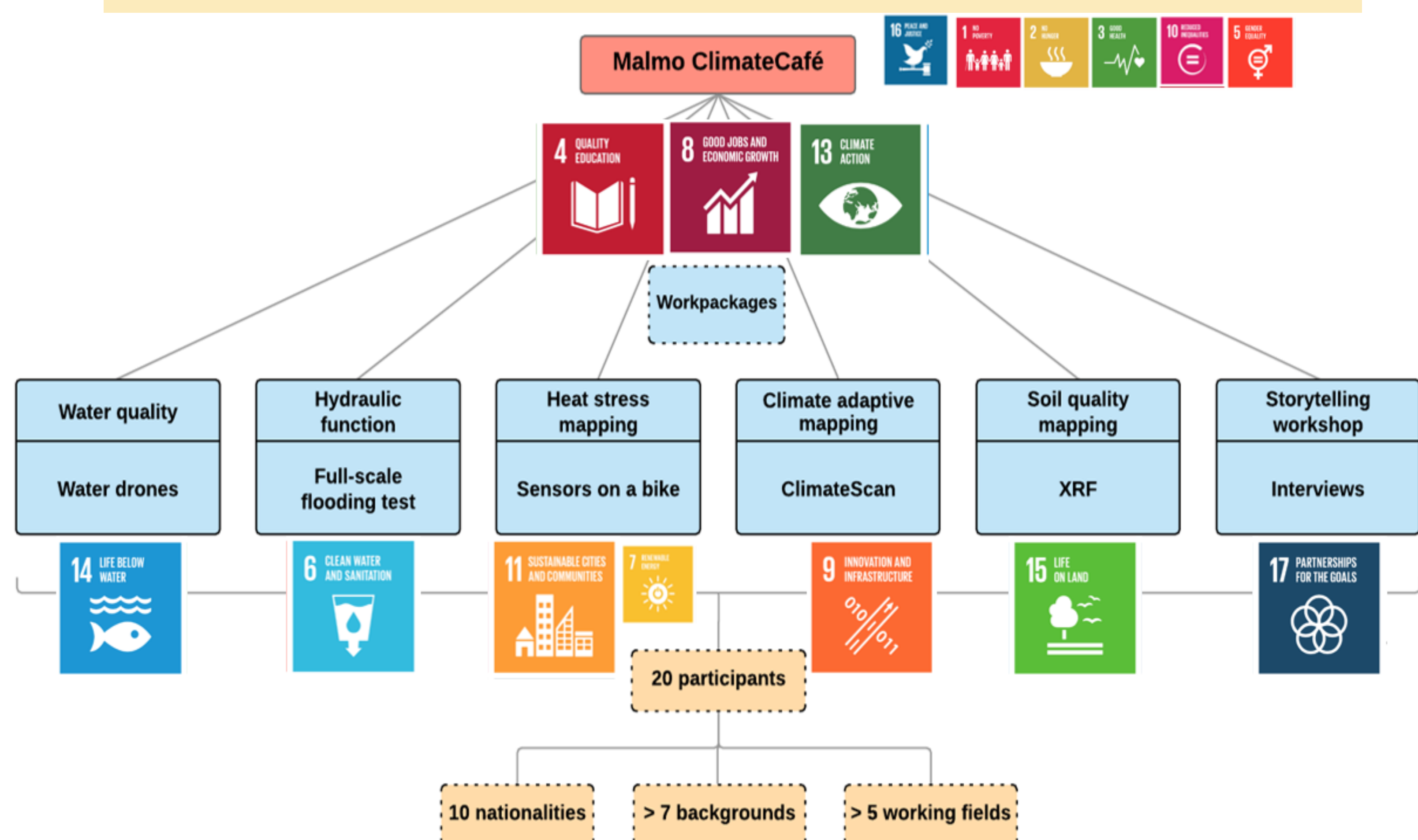
ClimateCafé addresses most SDGs including a workpackage on groundwater recharge by the means of nature-based solutions (NBS).



2. Methodology

“Tell me and I will forget, show me and I may remember; involve me and I will understand.”

Every ClimateCafe is different, the methods depend on the local challenges and questions of stakeholders. An example of multi risk analysing in climatecafe Malmö related to SDGs:



3. Case Studies

ClimateCafe is applied in different socio-economical contexts, facing different water resources management challenges.

ClimateCafe locations with mapping and research on groundwater recharge with bio swales, permeable pavement and raingardens:



Malmö, Sweden



Meppel, Netherlands



New Orleans, USA

Locations selected within large basins from source to mouth (e.g. spring/source, big reservoirs/dams, upstream and downstream of industry and urban areas, tributaries, mouth/estuary, fjords).



Aarhus, Denmark

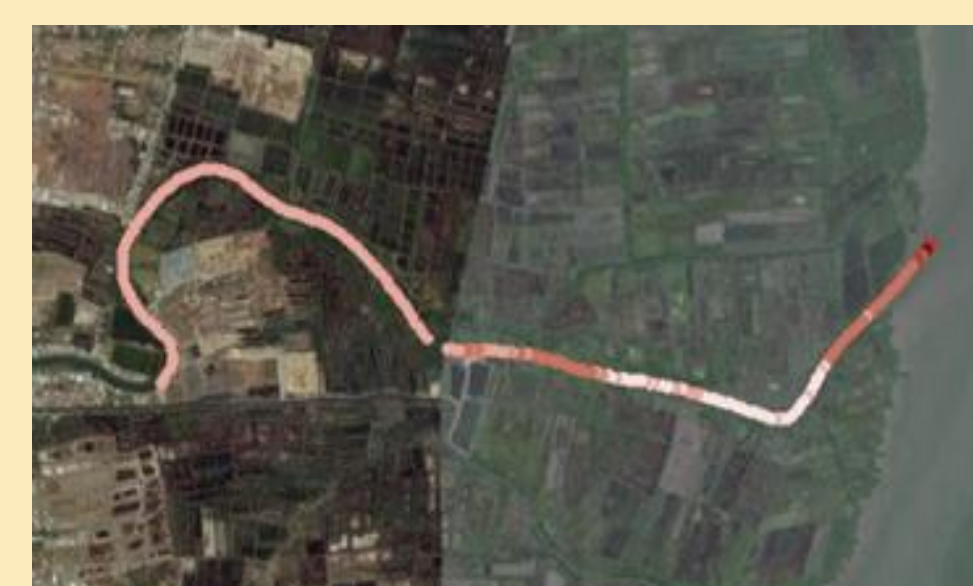


Bamako, Mali

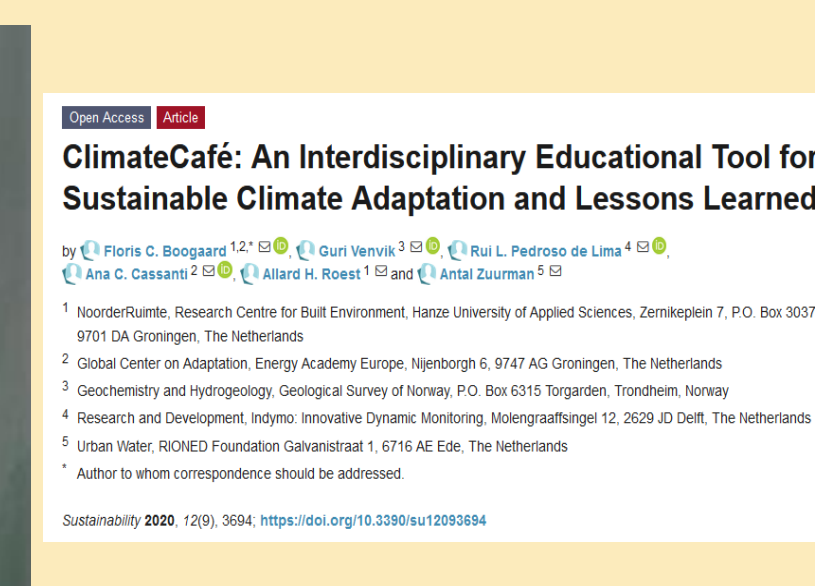


Surabaya, Indonesia

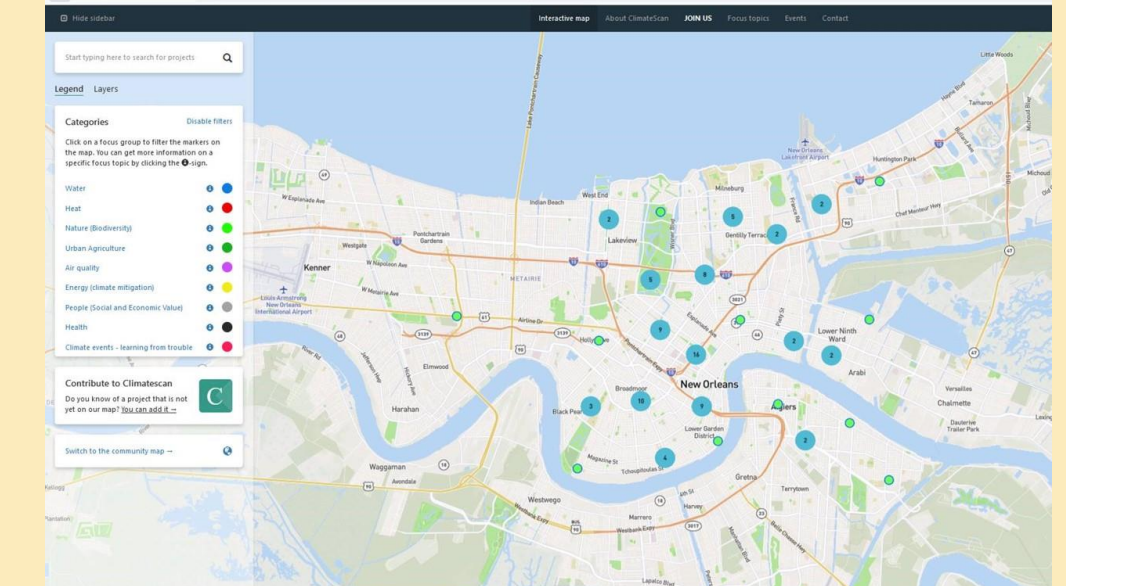
4. Results



Surabaya, Indonesia



Malmö, Sweden



New Orleans, USA

- Several results as 3D waterquality maps
- Scientific publications
- Mapping of over 8000 climate adaptation measures on climatescan.org

5. Conclusions

- The innovative participative method ClimateCafé helps stakeholders with testing, modelling, planning and scheduling of maintenance requirements for nature-based solutions with more confidence so that they will continue to perform satisfactorily over their intended design lifespan. Additionally, data is processed and design workshops facilitate integrated design of potential solutions which is disseminated through participants presenting their findings at conferences.
- More info can be found at ClimateCafe.nl. Join us!

International partners:

