



INTERNATIONAL CONFERENCE

GROUNDWATER, KEY TO THE SUSTAINABLE DEVELOPMENT GOALS

PARIS - May 18 -20, 2022



french
water
partnership



partenariat
français
pour l'eau



Organisation
des Nations Unies
pour l'éducation,
la science et la culture



sous le patronage
de la Commission
nationale française
pour l'UNESCO



MINISTÈRE
DE LA TRANSITION
ÉCOLOGIQUE
Liberté
Égalité
Fraternité



ORGANIZED BY IAH-CFH, UNESCO-IHP, THE FRENCH WATER PARTNERSHIP, UNDER THE PATRONAGE OF THE FRENCH NATIONAL COMMISSION FOR UNESCO AND WITH THE SUPPORT OF THE MINISTRY FOR ENVIRONMENT, SEINE-NORMANDY WATER AGENCY, AND SORBONNE UNIVERSITY



Groundwater, digital twins and artificial intelligence: issues, pitfalls, opportunities and prospects with the ARD Junon Program

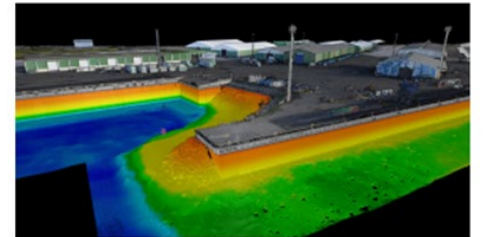
Daniel PIERRE, Antea Group
& Sébastien DUPRAZ, BRGM

Antea Group

Understanding today.
Improving tomorrow.

« Create a **digital research center** on the **continental environment** (agricultural, urban, forest and fluvial), including each level of the critical zone, and dedicated to research and innovation on all links of the value chain from environmental sensor to plain **digital twins**. »

- Improve the **management** of regional **natural resources** (water, air, soil)
- Better **predict** to help the harmonious and **sustainable development** of our territory
- Stimulate **collaboration** and **sharing** to create new applications



- 4 years long regional program starting from 2022
- About 15 millions of euros in investments (ARD, CPER and FEDER)
- Some twenty research teams involved (5 research organisms, 4 private companies)
- Coordinator: BRGM

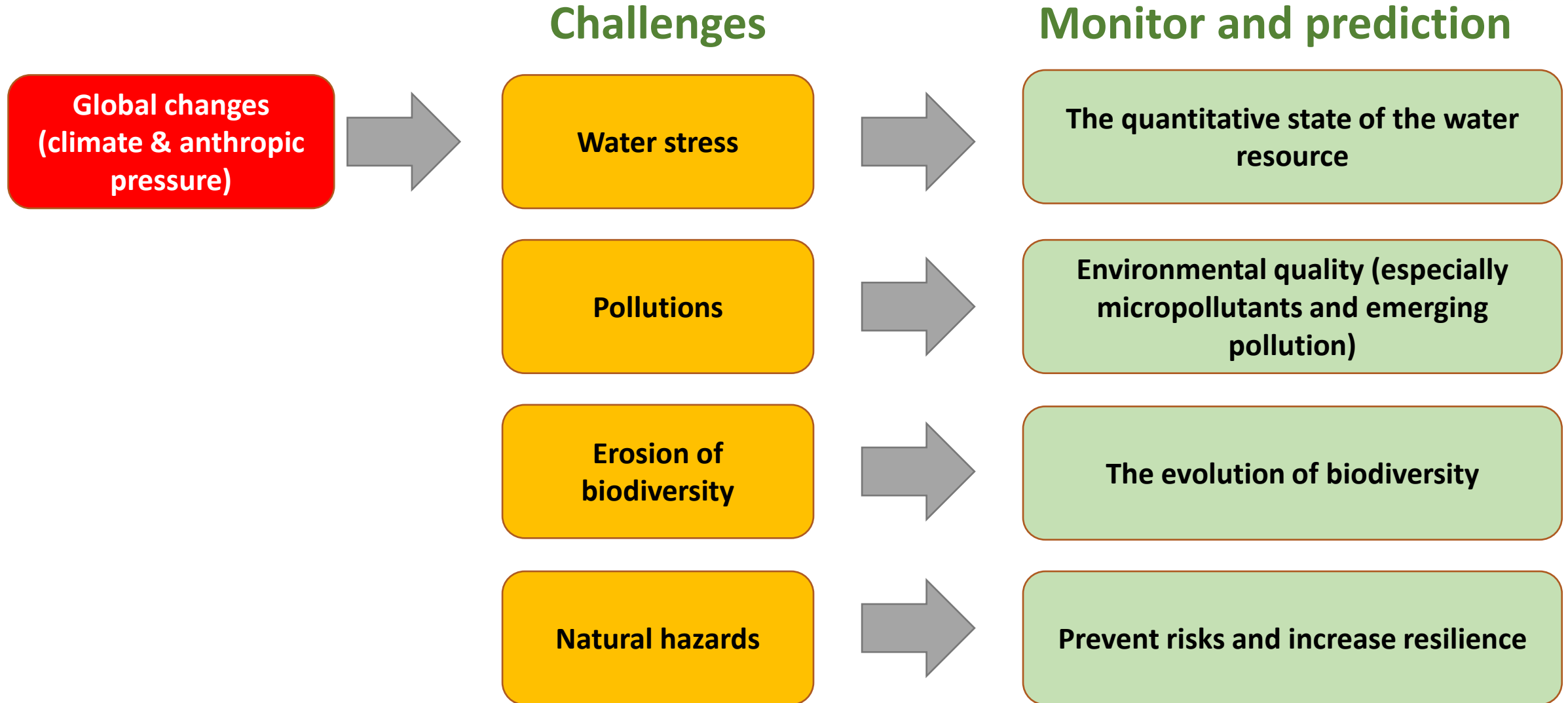
Geographic perimeter

Digital Twin of the Loire Brittany basin and the Beauce water table

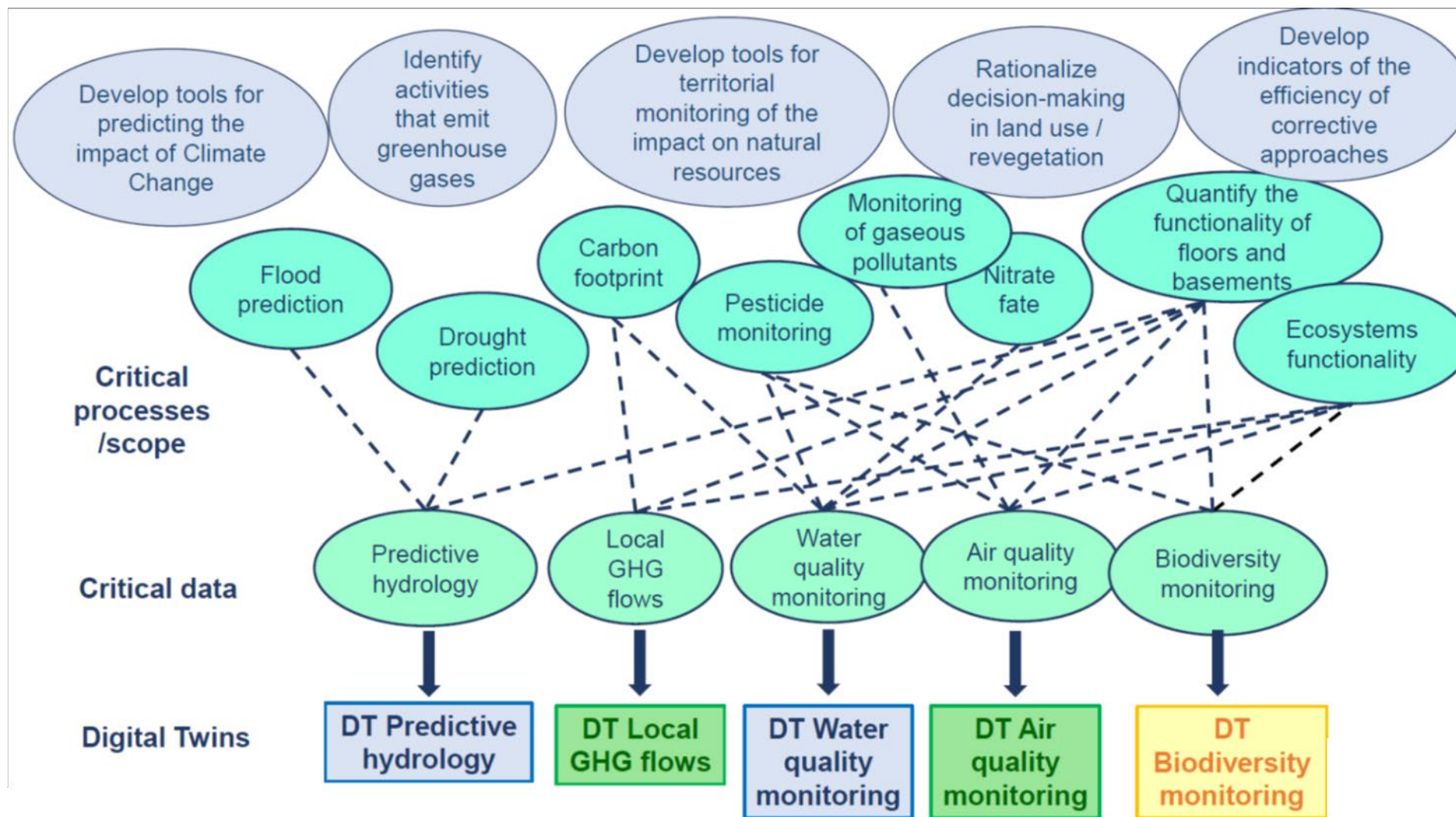


- Beauce water table (biggest in EU) and the beauce plain, the leading cereal-producing region in Europe.
- Sologne Natura 2000 site (biggest in EU).
- The orleans forest, the largest french state forest
- Loire Valley UNESCO world heritage and its historical metropolis.
- Loire Brittany basin : 30% of France but 50 % of the national agricultural production (in value)

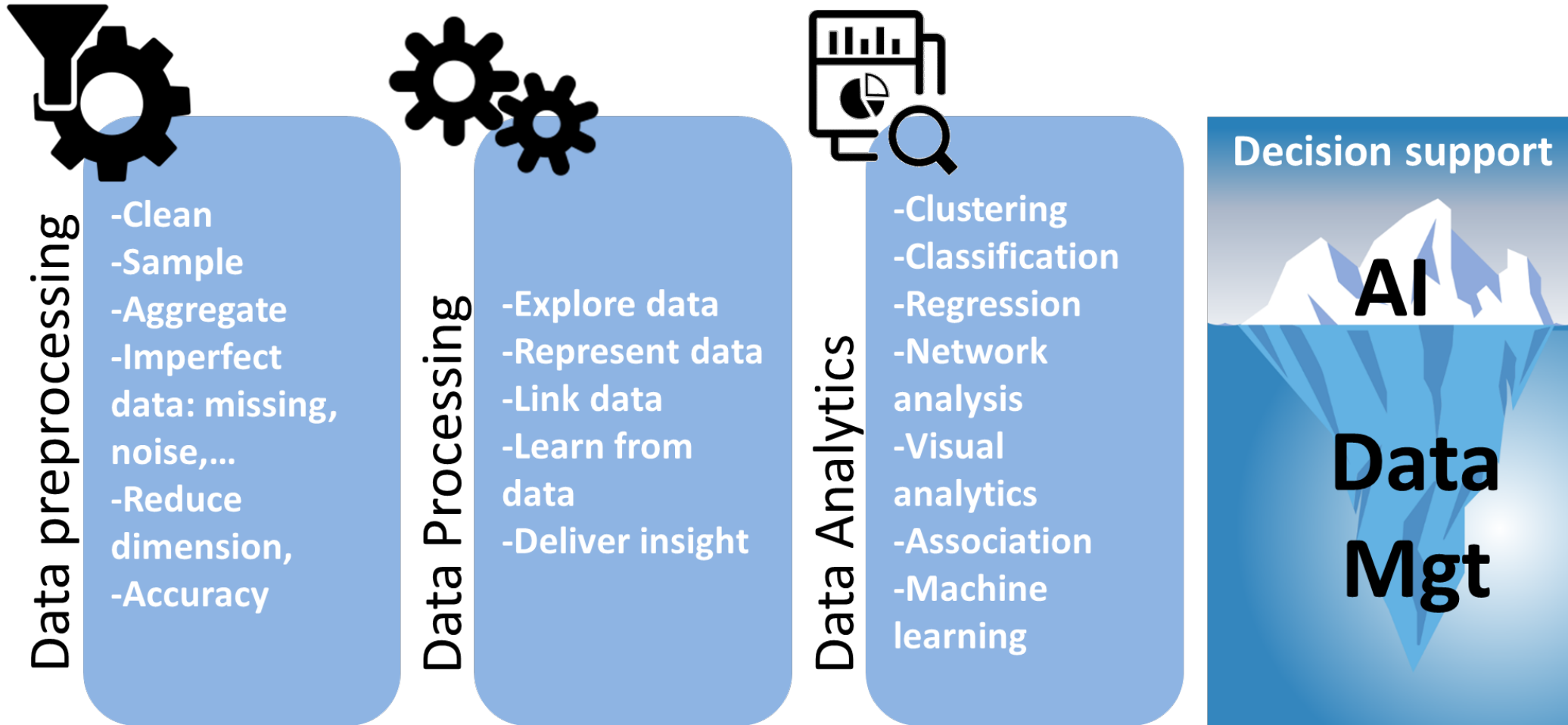
Junon program ambitions...



Several Environmental Digital Twins...



Environmental Digital Twins pitfalls ...



> 70% of the effort!

AI & Environmental data...

Centre Val de Loire region : hotspot for environmental data!



+ 100 economic actors working in the field of metrology, engineering and environmental information system

Such as:



IT & Env. Engineering

Public Services

Research



Agence de l'Environnement
et de la Maîtrise de l'Énergie



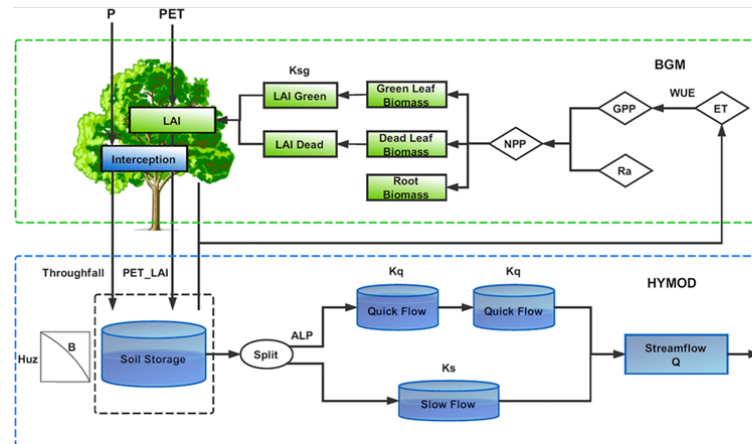
SDES



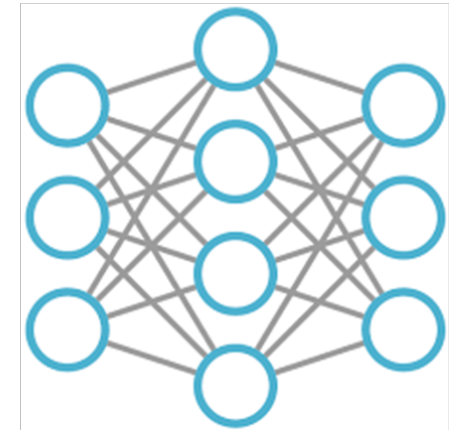
Understanding today.
Improving tomorrow.

Environmental Digital Twins pitfalls ...

Conceptual model



Machin Learning



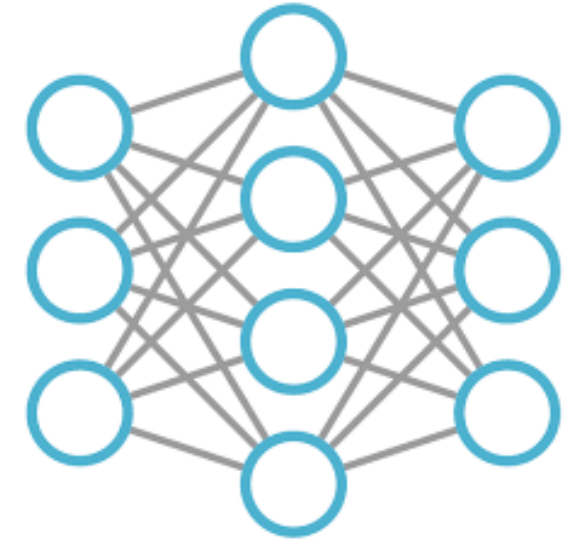
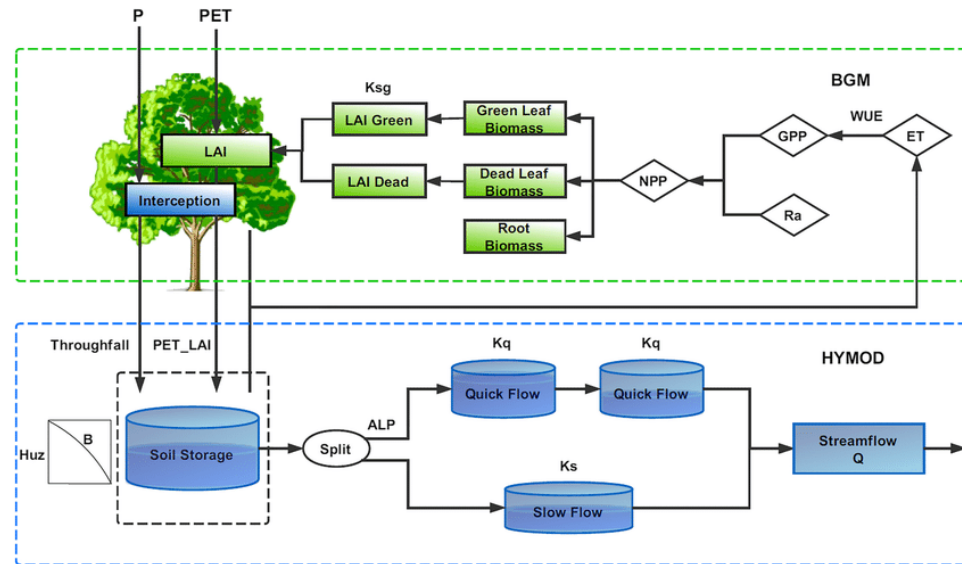
Environmental Digital Twins solutions ...



antea^{group}

Machin Learning

Conceptual model

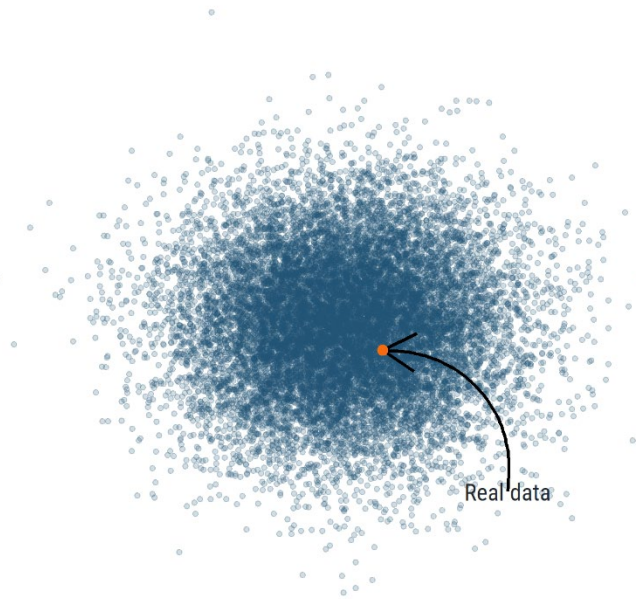


Metamodel AI !

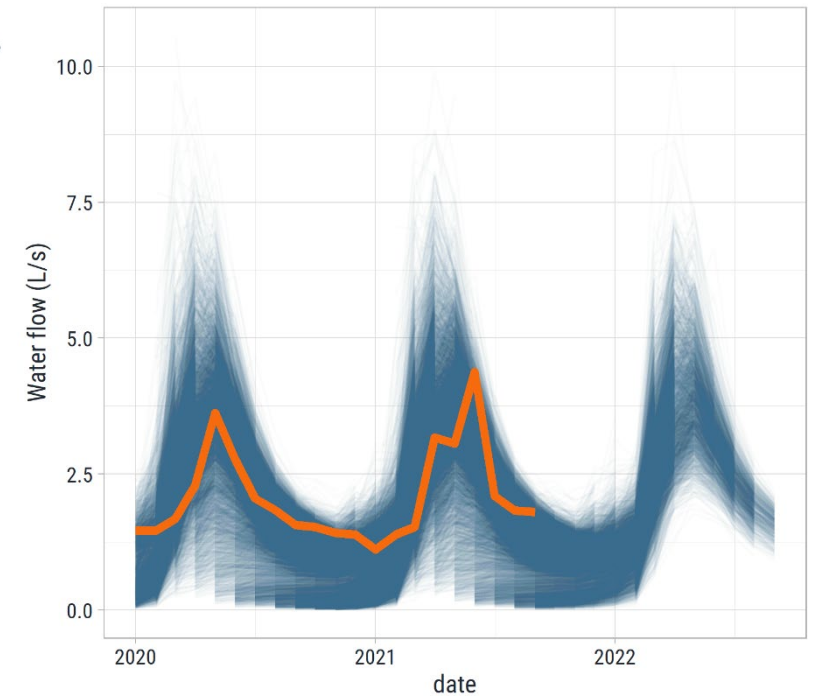


Extreme dataset projection

From one « 2 years » time serie to
16 000 yearly times series



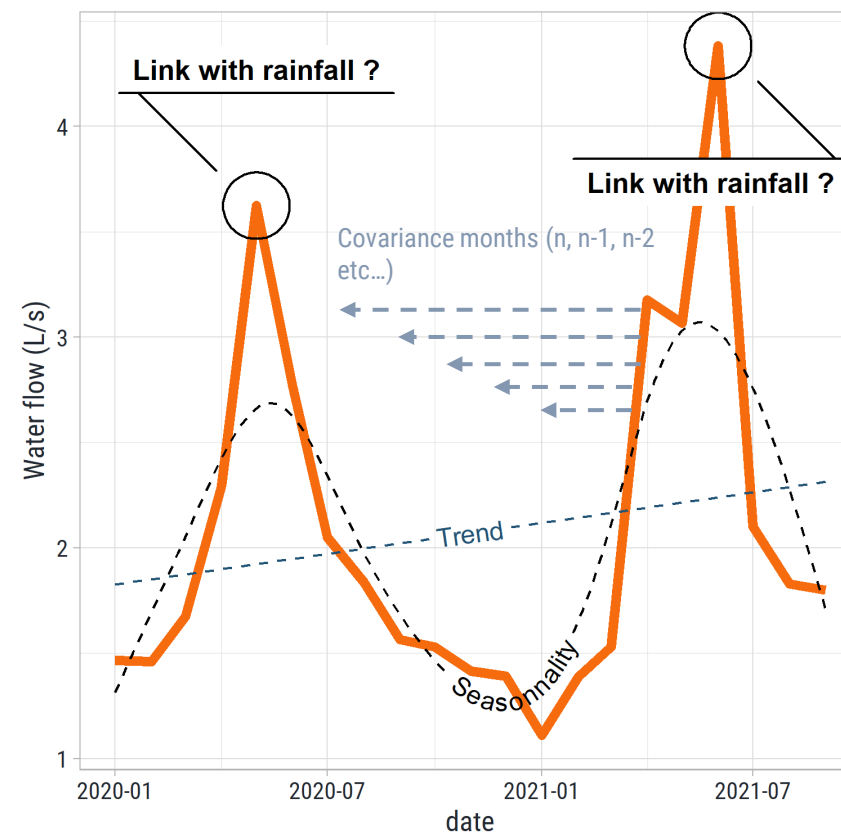
Extreme events condition «statistically»
extended





Features extraction

From one single signal to multiple derivated metrics





Building « AI metamodel »

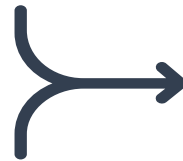
Crossing real time with trained model for forecast



Library of simulations

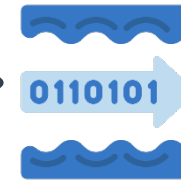


Real time water flow



Artificial intelligence algorithms

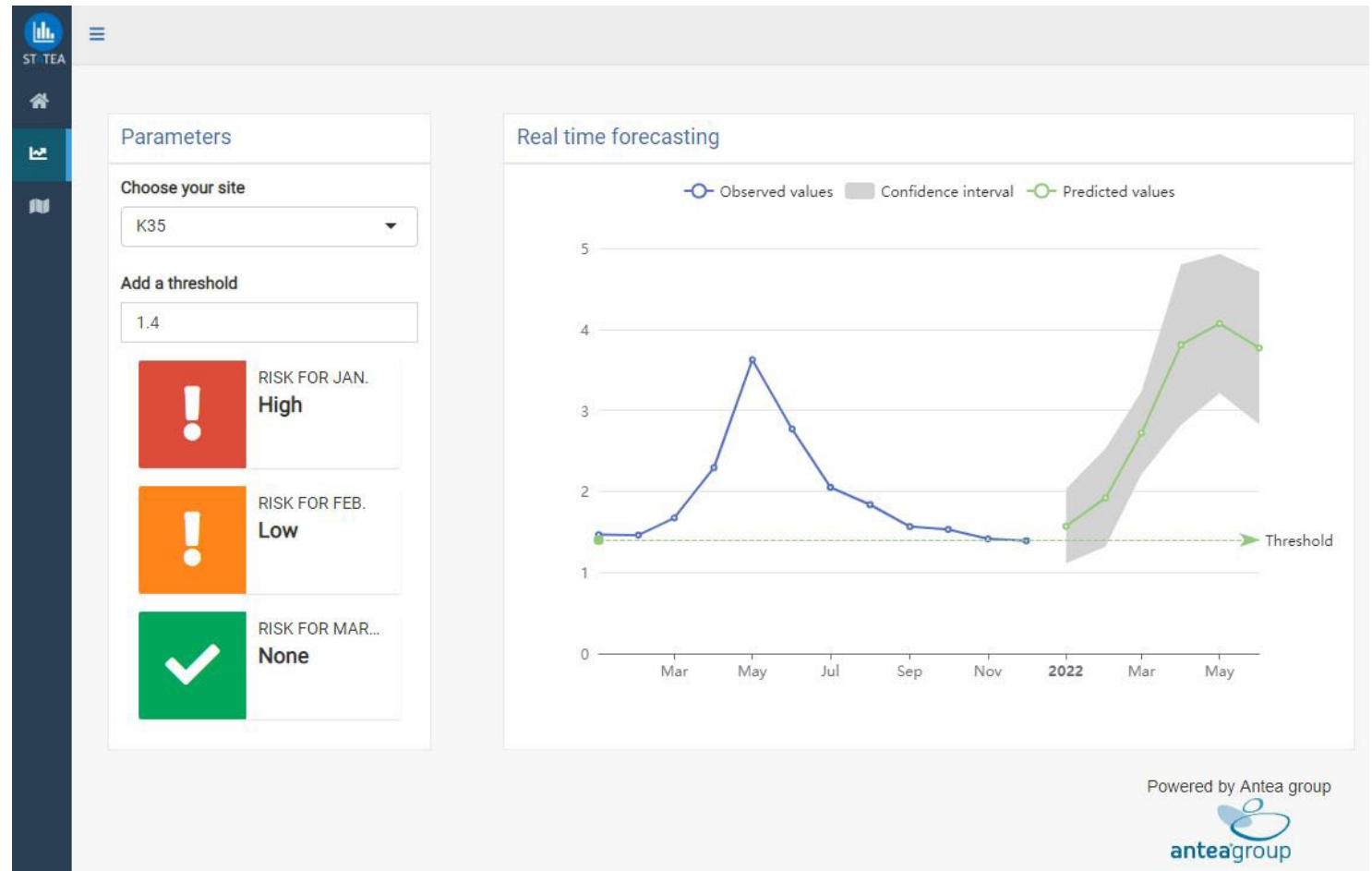
Real time forecasting



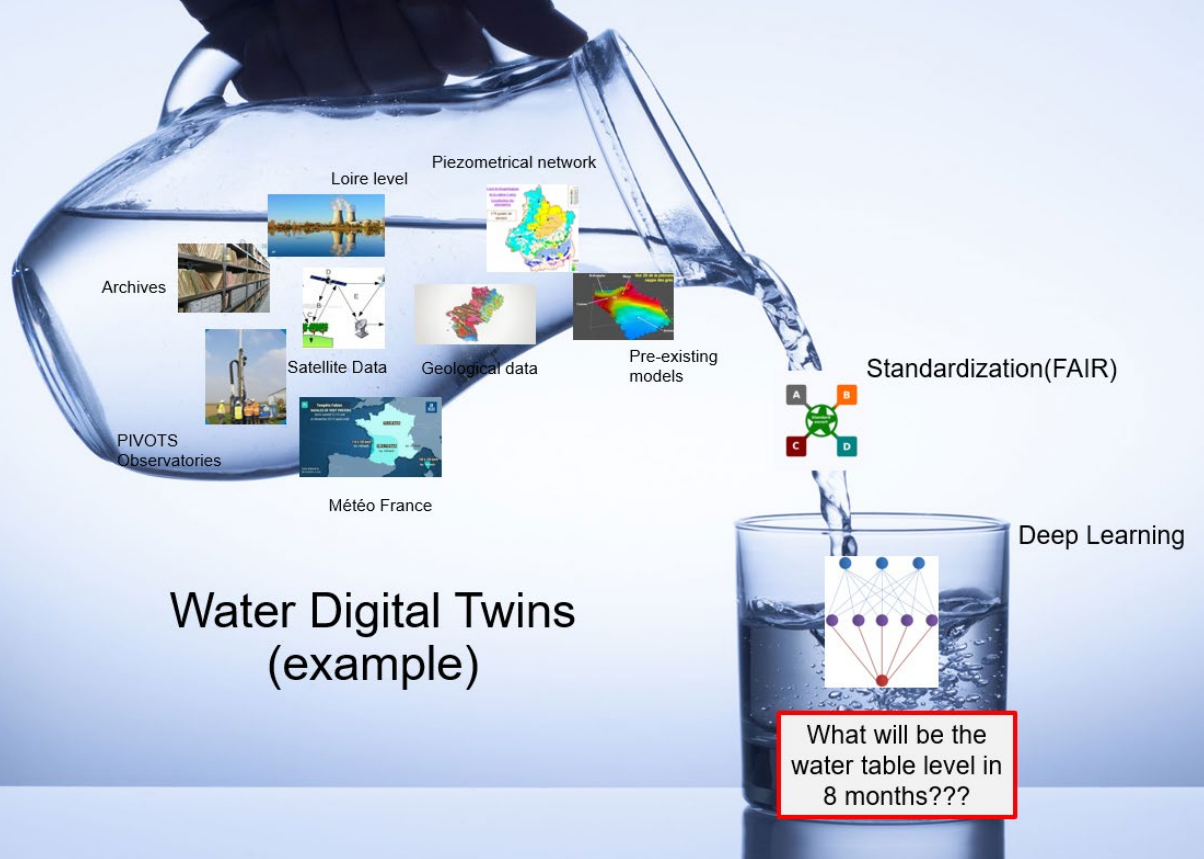
Early warnings

Sharable decision system

From model to API



Understanding today.
Improving tomorrow.



PROVISION OF COMMERCIAL DATA & INTERPRETATIONS

- Monitoring: management of natural resources, in situ validations and tests, deconvolution of complex phenomena
- Prediction: risk prediction, decision support
- Interpretation: basic research

KNOW-HOW TRANSFER

- Application development of:
 - processing of environmental data
 - data visualization
- AI development and predictive models
- Metrological developments associated with digital
- Access to a test or simulation area on primary or secondary data (sandbox)

PROVISION OF PUBLIC DATA

- INSPIRE Directive application
- Data related to the Public Twins