

International knowledge exchange on Nature Based Solutions for groundwater recharge

Laura Nougues

Floris Boogaard

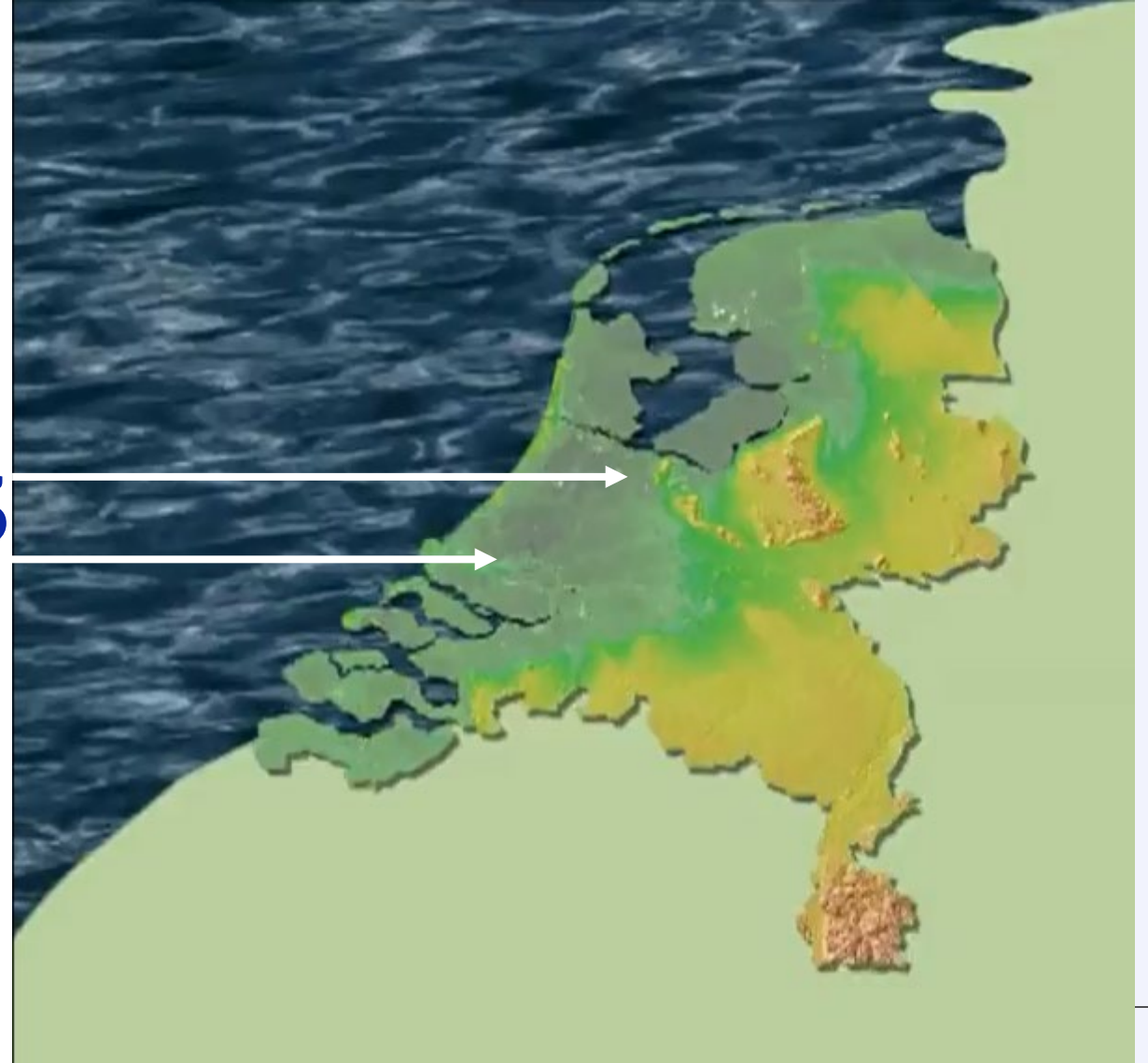
Roelof Stuurman

18 May 2022

Introduction

- What are the challenges?
- Where to find solutions?
- ClimateScan.org, why does it work?

Deltares



Challenges urban climate: Netherlands



Flooding



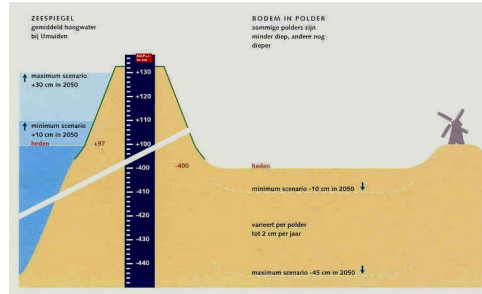
Tropisch Nederland, 1975.



Heat stress



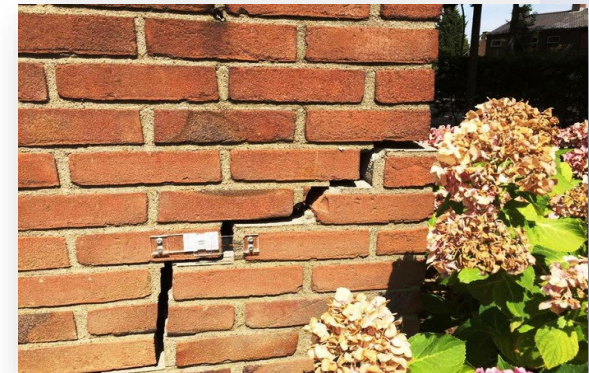
Water quality



Subsidence



Tropisch Nederland, 1975.



Drought



Dutch examples of problems in the urban areas: flooding, degradation of waterways, heat stress, drought leading to lower groundwater table and subsidence with results as damage of buildings.

Challenges urban climate: International



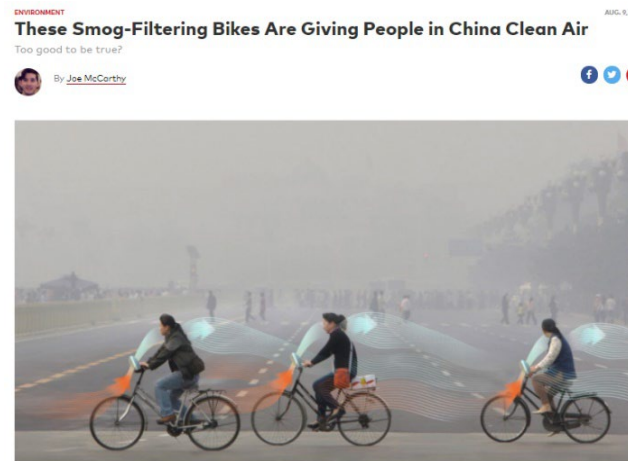
Flooding



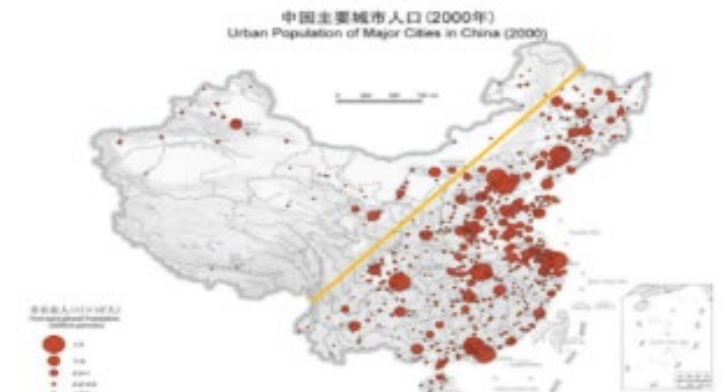
Water quality



Heat stress



Air quality



Urbanisation

Challenges urban climate

- Climate change is a global problem but adaptation measures are implemented locally.
- Stakeholder participation and social acceptance vital in adaptation.
- Tangible adaptation measures are required.



Bioswales for Urban Water Management



Sustainable Drainage System (SuDS)



Sponge City



Rain Garden

Where to find solutions?

Scan the QR Codes and
explore the different platforms



There is a clear demand for a collaborative knowledge-sharing on climate adaptation and mitigation.

[illegible]

ClimateScan.org

- Stakeholders like to have tools that are (top 5):
 1. 'do it yourself' citizen science;
 2. Free (no cost, free photo and film material);
 3. Provide more detailed information (exact location);
 4. Interactive (inter)national examples;
 5. link to scientific research on SuDS (publications, links to EU projects etc);
- Other platforms connected to specific projects.
- Inspires stakeholders to make their cities more resilient to climate change and promote groundwater recharge.



Top views ClimateScan.org

Why?

- Also small municipalities without platform
- Research related
- Multifunctional
- Small and simple (cheap, space)
- Quality Footage
- Bio friendly
-



1 Swale & playground, Dalfsen



2 Grid Pavers, Someren



3 Bio Swale Harkstraat, Amsterdam



4 Bio Swale, Veldbiezenweg Zwolle



5 Bio Swale, Alphen



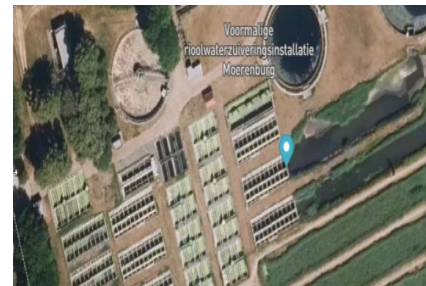
6 Gully free road to swale, Almelo



7 Grid Pavers, Zoeterwoude



8 Raingardens & GP, Reestraat Arnhem

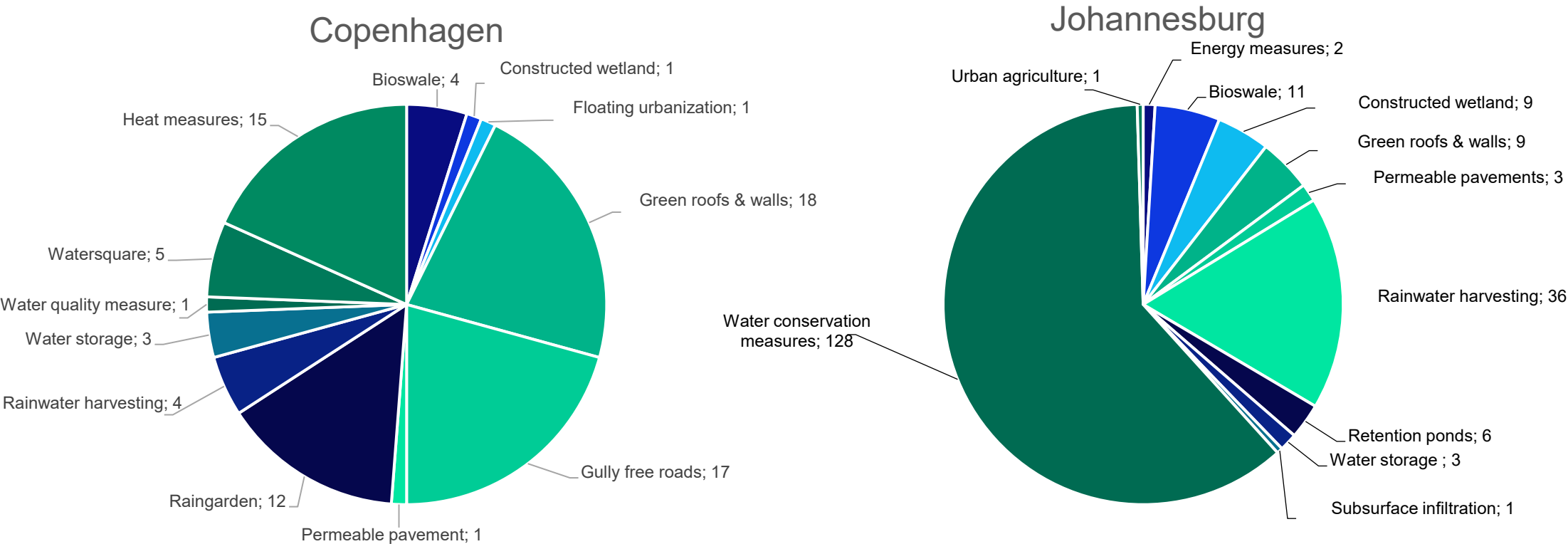


9 Waterharmonica, Moerenburg



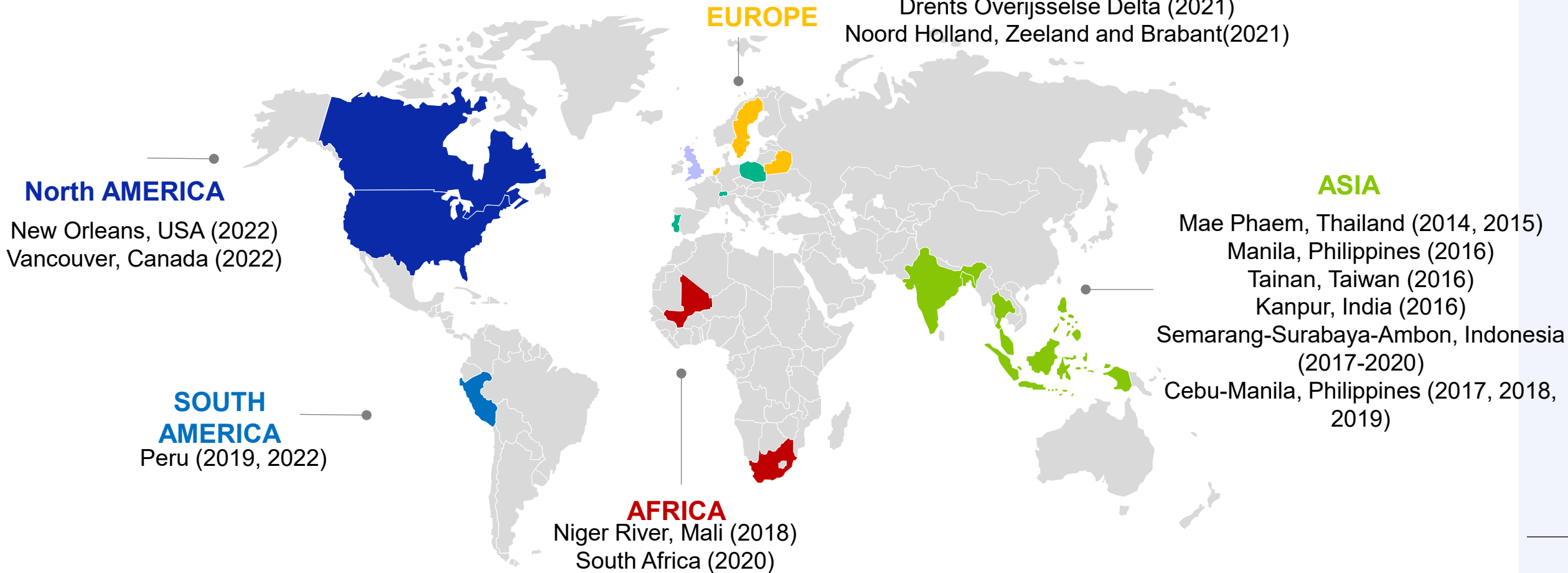
10 Raingarden, Amsterdam

Determine DNA of (green) cities

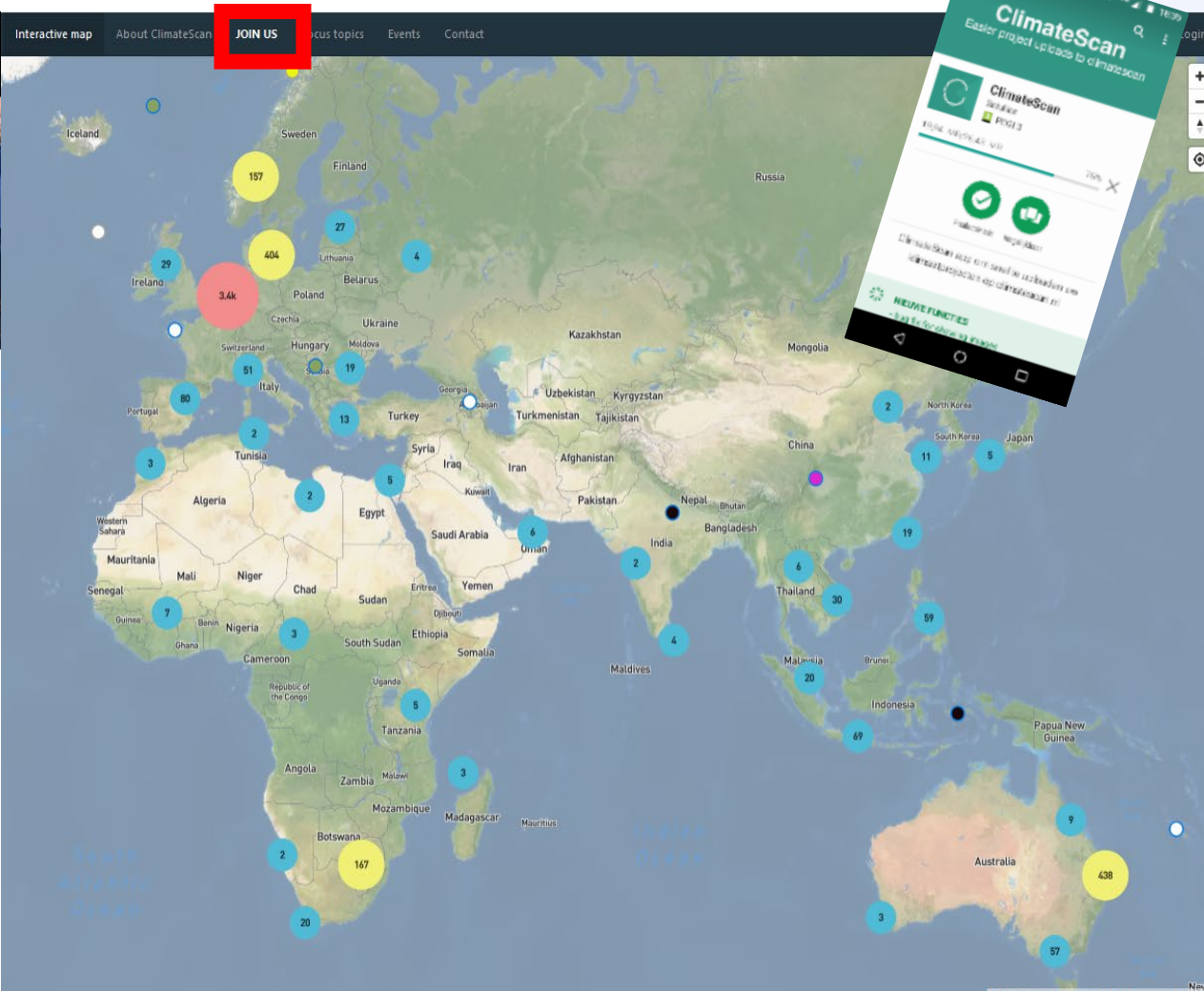


Riga, Latvia (2019)
Oldenburg, Germany (2020)
Malmö, Sweden (2019)
Groningen, The Netherlands (2020)
Rotterdam, The Netherlands (2020)
Chur, Switzerland (2019)
Gdansk, Poland (2021)
Coimbra, Portugal (2022)

The Netherlands
Cities:
Groningen (2014, 2017-2022)
Rotterdam (2017-2019, 2022)
Leeuwarden, Hoogeveen, Kampen, Apeldoorn,
Arnhem, Tilburg, Nijmegen, Eindhoven (2015-2022)
Regions:
GrensMaas (2020, 2022)
Drents Overijsselse Delta (2021)
Noord Holland, Zeeland and Brabant (2021)



Final message



ClimateCafe IMPETUS: collect climate data in your city (April 12-16)

POSTED ON MARCH 24, 2021 BY ADMIN

In European cities the threats of climate change become crucial for city development and human safety. Even though,

cities are... [READ MORE](#)



Coming up: Dutch National ClimateCafe May 2021, The Netherlands

POSTED ON MARCH 24, 2021 BY ADMIN

A Dutch national ClimateCafe will be held during the 'week of water' in the last 2 weeks of May on... [READ MORE](#)



ClimateCafe Challenge Metro Cebu Rivers The Philippines (March 23 2021)

POSTED ON MARCH 21, 2021 BY ADMIN